

SEABROOK REAL ESTATE INTRODUCES

FERNWOOD STATION

YOUR HOMEBASE FOR COASTAL ADVENTURE



SEABROOK
SINCE 20 YEARS 2004



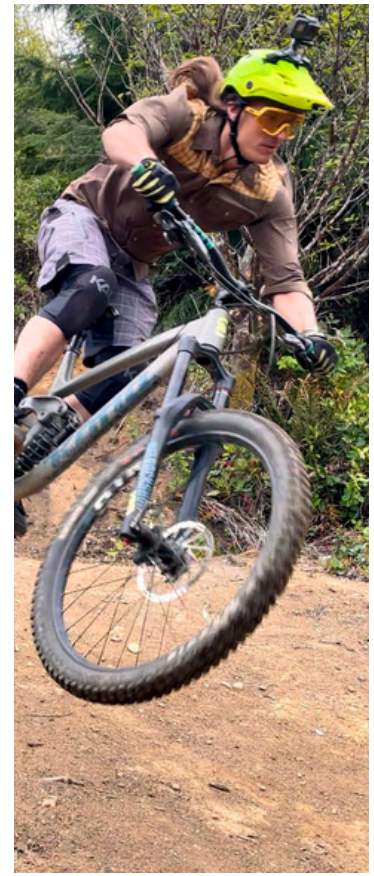
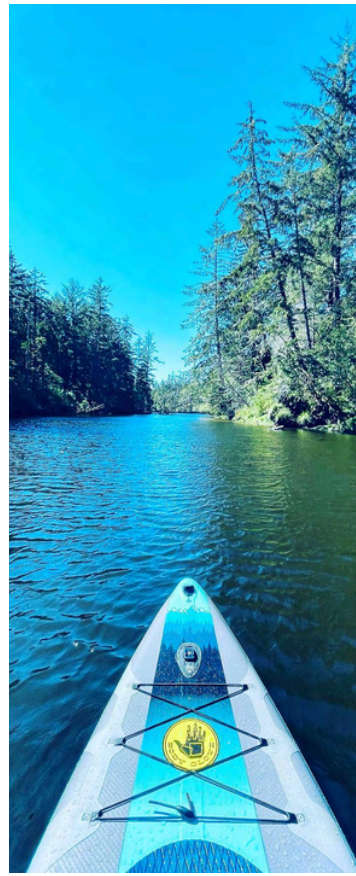
FOR THOSE WHO WANT
TO BE CONNECTED TO
THE OUTDOORS WHILE
ENJOYING THE LUXURIES
OF COASTAL LIVING



Seabrook Started 20 Years Ago with a Love of the Washington Coast and the Dream to Bring Back the Art of Town Building

The town of Seabrook was first founded in 2004 by Casey and Laura Roloff and has affectionately become known as Washington's Beach Town by locals and visitors alike. Inspired by Seaside, Florida, Seabrook was built with a foundation of new urbanism design where homes, shops, and restaurants are now seamlessly woven into a scenic bluff overlooking the Pacific Ocean.

Casey and Laura first met in high school and quickly realized they had one major thing in common: they loved the beach!



After graduating college, they married and moved to the Oregon coast, where they started their very first business painting houses. As the Roloffs became more involved in the local community, they studied the local and national real estate markets and recognized an opportunity to build custom vacation homes, second homes, and primary residences that had architectural character and uncommon attention to detail.

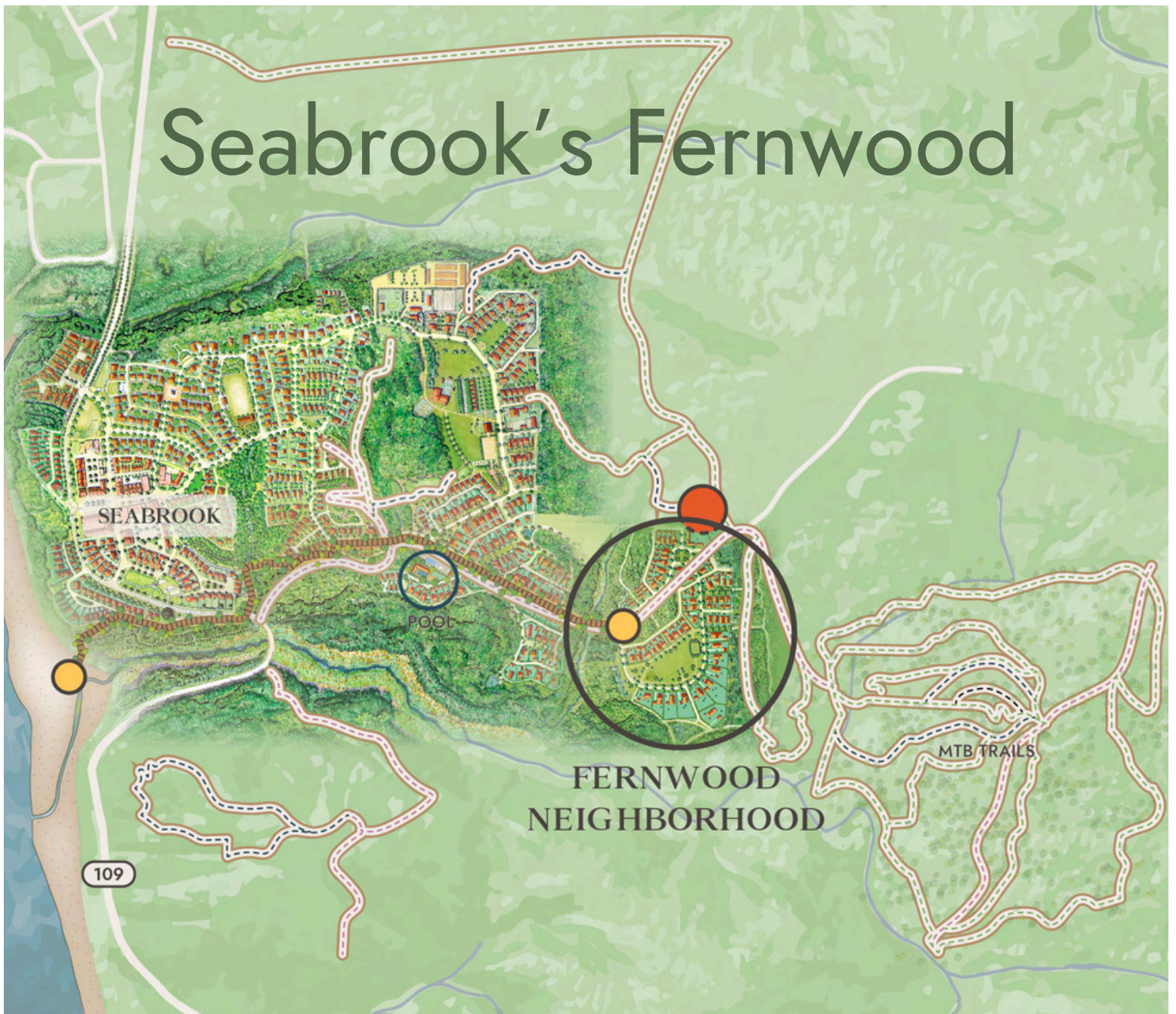


Using new urbanist design principles and inspiration from the internationally recognized town of Seaside, Florida, they set out to build their first beach community, Bella Beach, on the Oregon Coast.

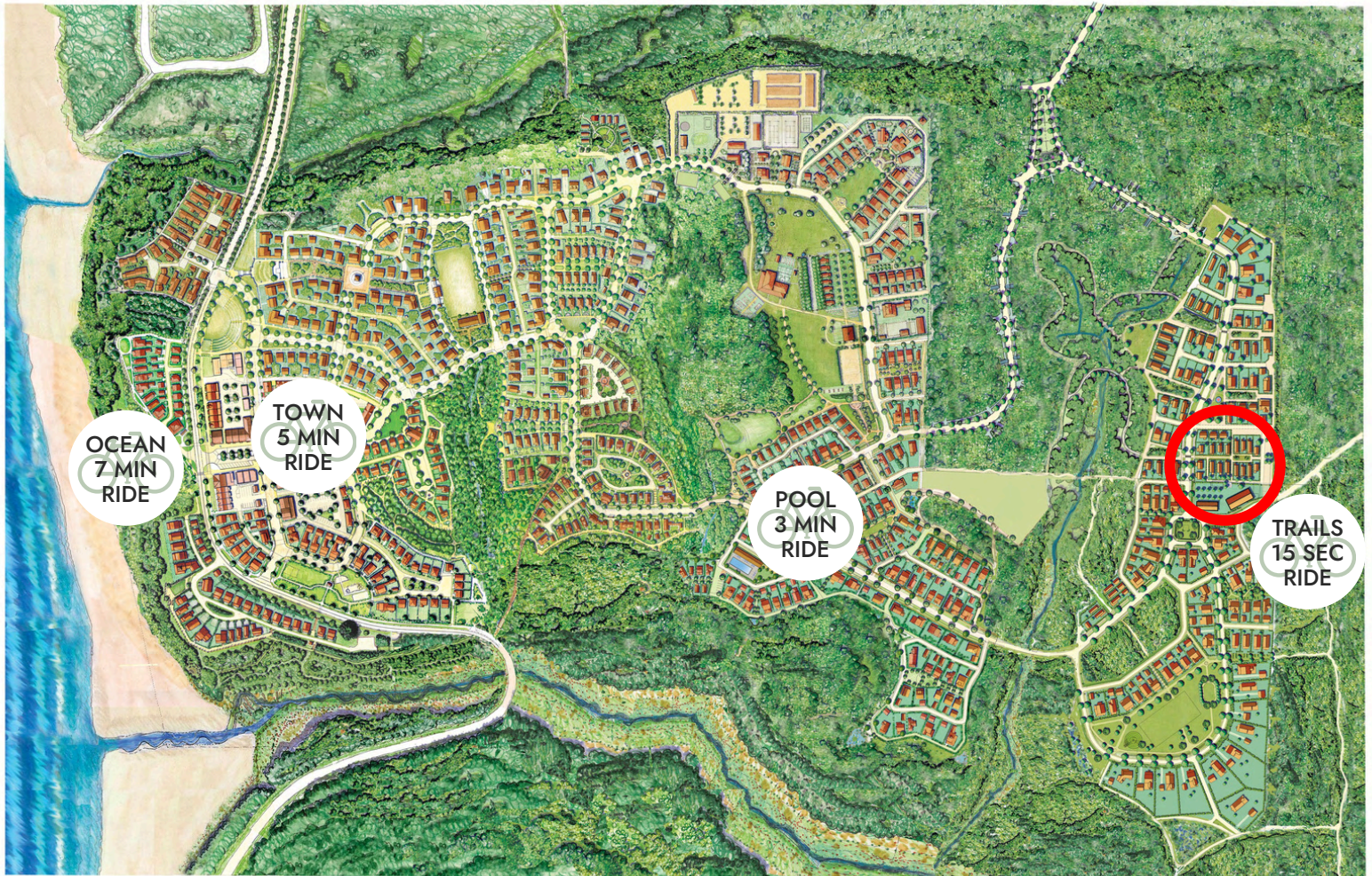
Finding great success with Bella, they

eventually looked northward towards Washington State for a similar opportunity. This led them to Grays Harbor County, where, in 2004, they, along with their innovative design team, worked collaboratively to curate and develop Washington's most celebrated beach town.

Seabrook's Fernwood



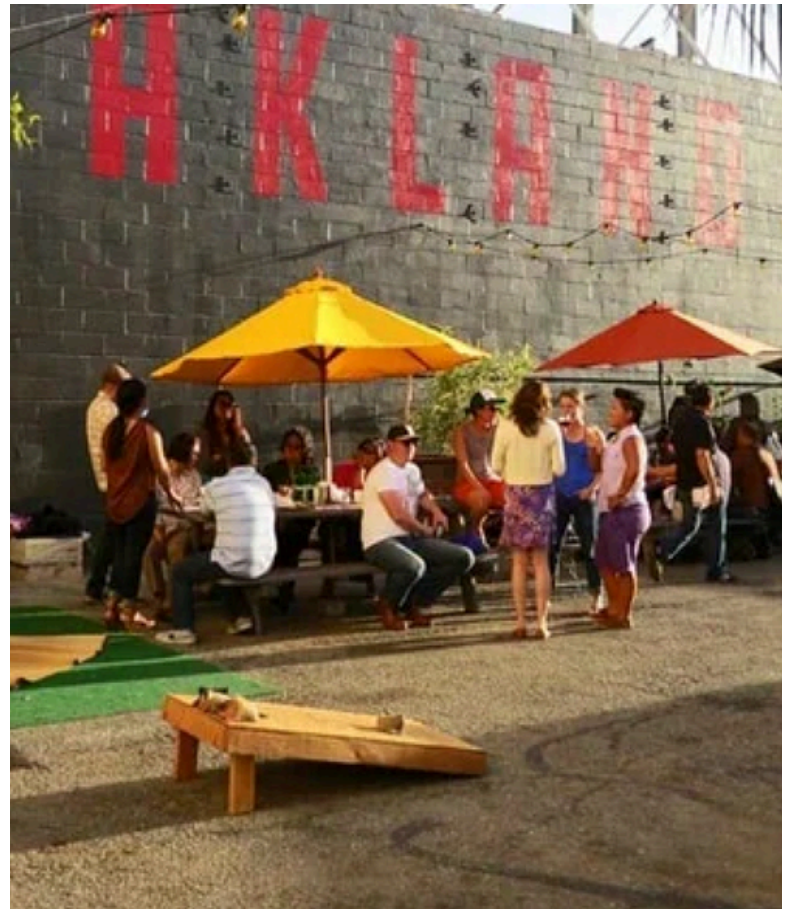
Situated to the east of the South Farm neighborhood, new homes have been released in Seabrook's new neighborhood, Fernwood! Where adventure begins with bike trails, Growler's Alley hub with food and drinks, outdoor games, and new parks. As Seabrook's gateway to outdoor recreation, over 24 miles of biking and walking trail networks start at its front door. Fernwood offers natural surroundings while being close to the beach, the pools, and the town center. This new neighborhood features a wide variety of homes and lot sizes, including small cottages and garden lots.



“ People are really prioritizing quality of life, having the connection to nature, to their neighbors, having places to go with their friends and family to create really special traditions. That is what Seabrook is all about and this new neighborhood really epitomizes that by having all this natural space around the community, but also access to our growing town center and these beautiful beaches. ”

- Casey Roloff, CEO & Town Co-Founder





Fernwood Station: A Basecamp for Your Next Great Adventure

Fernwood Station is the latest addition to the Fernwood neighborhood, inspired by the nostalgic charm of woodland beach cottages. This new neighborhood serves as a vibrant hub on the east side of town. Designed for those who feel at home among the cedars and the sprawling trails, Fernwood Station is more than just a place to live – it's a gateway to the outdoors.

Here, life is about balance – the comfort of high-quality living combined with the allure of recreation on the Washington coast. It's a place where the day starts on the miles of hiking and biking trails and ends gathered around a fire pit, engaged in a friendly game of bocce, or enjoying a casual picnic in the park.



FERNWOOD STATION MAP

A Basecamp for Your Next Great Adventure



DETAILS SUBJECT TO CHANGE
PLEASE REVIEW ALL STANDARDS AND UPGRADES WITH YOUR DESIGNATED SALES REPRESENTATIVE



JOE CREEK

SR 109 HIDDEN COAST SCENIC BYWAY

BORDER TRAIL

BORDER TRAIL

CEDAR HOLLOW

CEDAR HOLLOW

BORDER TRAIL

NELLIE CREEK

WHOA NELLIE

SIDNEY TRAIL

SIDNEY TRAIL

NORTH GLEN TRAIL

BORDER TRAIL

ZIPLINE
TROLL TRAIL
FARM TRAIL
TROLL TRAIL
WORMHOLE

NARNIA

DIPPER TRAIL
GNOME TRAIL
LITTLE DIPPER
BIG DIPPER

NARNIA

GET THE STINK OUT

BEACH TRAIL

CEDAR RUN TRAIL

ELK CREEK

MIKE-O-RAMA

SR 109 HIDDEN COAST SCENIC BYWAY



PRIVATE PROPERTY

SEABROOK TRAIL MAP

HIKING & MIXED USE TRAILS

NORTH GLEN TRAIL

MODERATE TERRAIN ◦ .31 MILES

DIPPER TRAIL

CHALLENGING TERRAIN ◦ .4 MILES

GNOME TRAIL

EASY TERRAIN ◦ .13 MILES

BEACH TRAIL

MODERATE TERRAIN ◦ .26 MILES

FARM TRAIL

EASY TERRAIN ◦ .14 MILES

TROLL TRAIL

CHALLENGING TERRAIN ◦ .35 MILES

CEDAR RUN TRAIL

EASY TERRAIN ◦ .35 MILES

MIXED USE HIKING & BIKING TRAILS

BORDER TRAIL

EASY TERRAIN ◦ 2.3 MILES

NARNIA

EASY TERRAIN ◦ .47 MILES

SIDNEY TRAIL

MODERATE TERRAIN ◦ .42 MILES

CEDAR HOLLOW

EASY TERRAIN ◦ .82 MILES

MOUNTAIN BIKING TRAILS

ZIPLINE

EASY TERRAIN ◦ .23 MILES

WORMHOLE

MODERATE TERRAIN ◦ .12 MILES

BUCK LAKE

EASY TERRAIN ◦ 1.7 MILES

GET THE STINK OUT

EASY TERRAIN ◦ .45 MILES

SUNBURNT

EASY TERRAIN ◦ .34 MILES

HIGHWAY 1-o-FUN

EASY TERRAIN ◦ .23 MILES

TSUNAMI

EASY TERRAIN ◦ .21 MILES

POSEIDON

EASY TERRAIN ◦ .29 MILES

MIKE-O-RAMA

MODERATE TERRAIN ◦ .55 MILES

WHOA NELLIE

MODERATE TERRAIN ◦ .66 MILES

RIPTIDE

MODERATE TERRAIN ◦ .17 MILES

13 TABLES

MODERATE TERRAIN ◦ .28 MILES

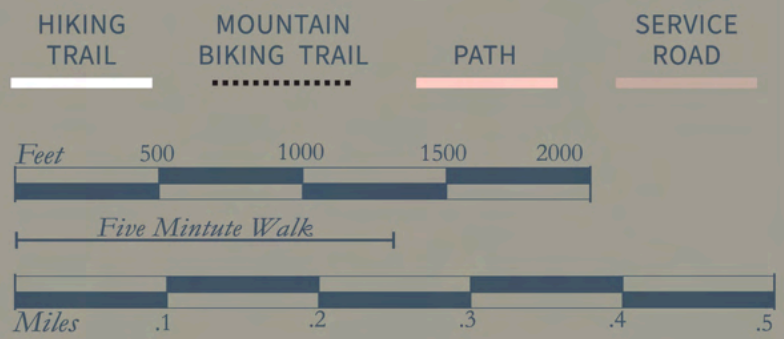
SUBMARINE CANYON

CHALLENGING TERRAIN ◦ .1 MILES

PRIVATE PROPERTY



DIGITAL TRAIL MAP



SEABROOK
SINCE 20 YEARS 2004



YARROW
COTTAGES



LOT 725

YARROW

2 BR 1 BA

612 SQ FT

Not Released

LOT 726

YARROW

2 BR 1 BA

612 SQ FT

\$569,000

LOT 727

YARROW

2 BR 1 BA

612 SQ FT

SOLD



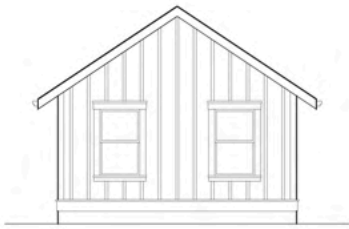
THE YARROW
LOT 725

2 BED 612
1 BATH SQ FT

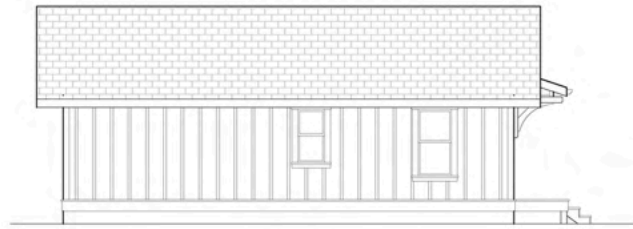
\$574,000



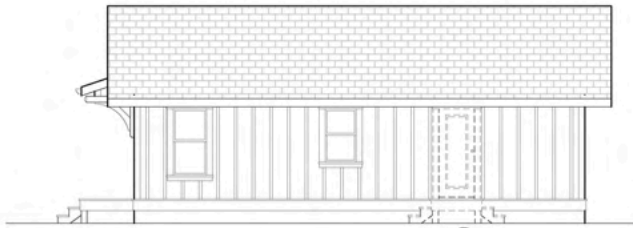
FLOOR PLANS AND ELEVATIONS



SOUTH ELEVATION



WEST ELEVATION



EAST ELEVATION

UPGRADE OPTION
PORCH W/STOOP



NORTH ELEVATION

UPGRADE OPTION
CEILING BRIDGE
POND

UPGRADE OPTION
BOOK W/STOOP



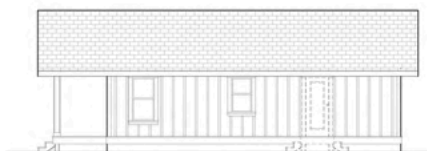
FLOOR PLANS AND
ELEVATIONS
WITH THE PORCH
UPGRADE OPTION
PRICE VARIES



SOUTH ELEVATION



WEST ELEVATION



EAST ELEVATION

UPGRADE OPTION
PORCH W/STOOP



NORTH ELEVATION

UPGRADE OPTION
CEILING BRIDGE
POND

UPGRADE OPTION
BOOK W/STOOP





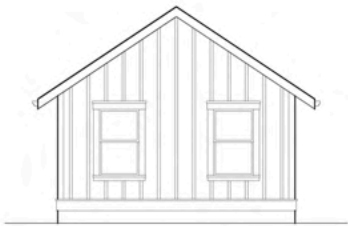
THE YARROW
LOT 726

2 BED 612
1 BATH SQ FT

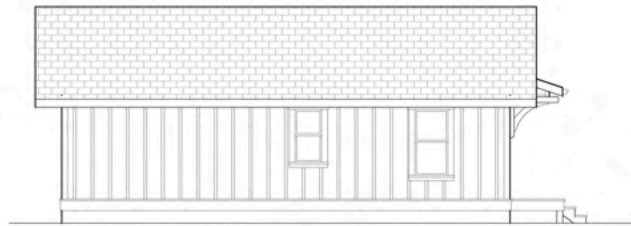
\$569,000



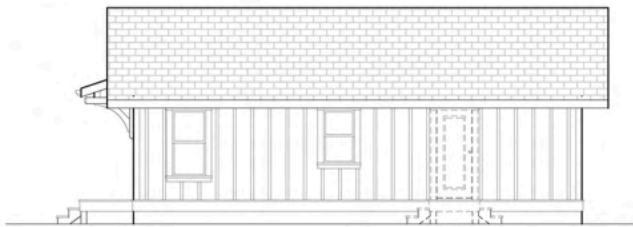
FLOOR PLANS AND ELEVATIONS



SOUTH ELEVATION



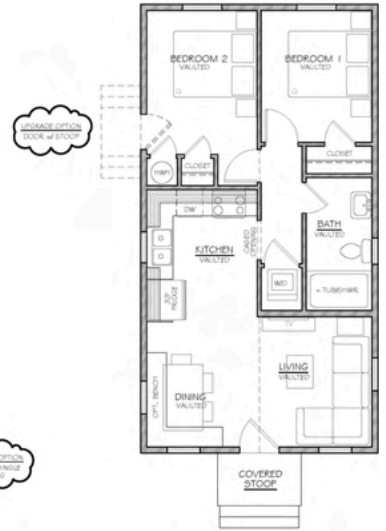
WEST ELEVATION



EAST ELEVATION



NORTH ELEVATION



FLOOR PLANS AND
ELEVATIONS
WITH THE PORCH
UPGRADE OPTION
PRICE VARIES



SOUTH ELEVATION



WEST ELEVATION



EAST ELEVATION



NORTH ELEVATION





THE YARROW
LOT 727

2 BED 612
1 BATH SQ FT

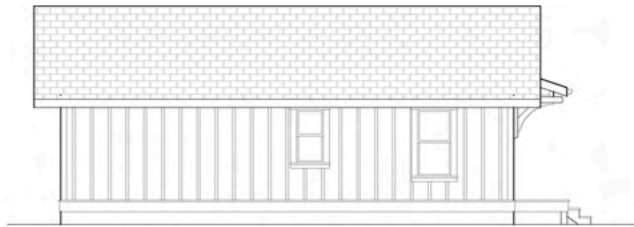
\$579,000



FLOOR PLANS AND ELEVATIONS

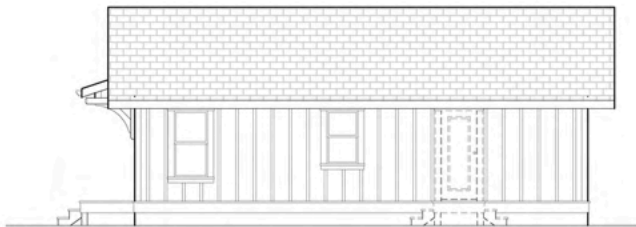


SOUTH ELEVATION



WEST ELEVATION

UPGRADE OPTION
DOOR W/ STOOP



EAST ELEVATION

UPGRADE OPTION
DOOR W/ STOOP



NORTH ELEVATION

UPGRADE OPTION
SEMI-ENCLOSED
PORCH

FLOOR PLANS AND
ELEVATIONS
WITH THE PORCH
UPGRADE OPTION
PRICE VARIES



SOUTH ELEVATION



WEST ELEVATION

UPGRADE OPTION
SEMI-ENCLOSED
PORCH



EAST ELEVATION

UPGRADE OPTION
SEMI-ENCLOSED
PORCH



NORTH ELEVATION



SEABROOK
SINCE 20 YEARS 2004



BLUEBELL
COTTAGES



LOT 736
BLUEBELL

1 BR 1 BA
416 SQ FT

Not Released

LOT 737
BLUEBELL

1 BR 1 BA
416 SQ FT

\$469,000

LOT 738
BLUEBELL

1 BR 1 BA
416 SQ FT

SOLD

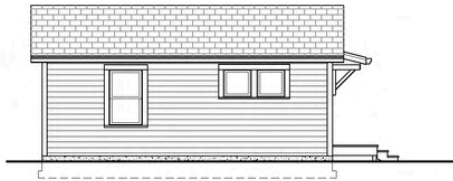


THE BLUEBELL
LOT 736

1 BED 416
1 BATH SQ FT



FLOOR PLANS AND ELEVATIONS



LEFT SIDE ELEVATION
(BASE PLAN)



FRONT ELEVATION
(BASE PLAN)



RIGHT SIDE ELEVATION
(BASE PLAN)



REAR ELEVATION
(BASE PLAN)

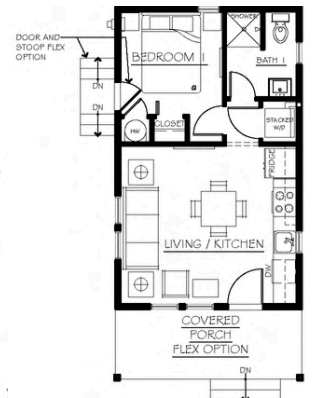
FLOOR PLANS AND
ELEVATIONS
WITH THE PORCH
UPGRADE OPTION
PRICE VARIES



LEFT SIDE ELEVATION
(FLEX OPTIONS PLAN)



FRONT ELEVATION
(FLEX OPTIONS PLAN)



RIGHT SIDE ELEVATION
(FLEX OPTIONS PLAN)



REAR ELEVATION
(FLEX OPTIONS PLAN)

DETAILS AND PRICING SUBJECT TO CHANGE

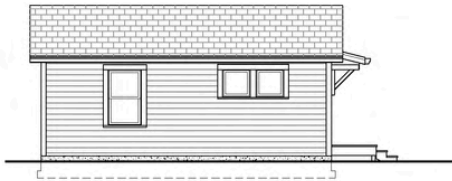


THE BLUEBELL
LOT 737

1 BED 416
1 BATH SQ FT



FLOOR PLANS AND ELEVATIONS



LEFT SIDE ELEVATION
(BASE PLAN)



FRONT ELEVATION
(BASE PLAN)



RIGHT SIDE ELEVATION
(BASE PLAN)



REAR ELEVATION
(BASE PLAN)

FLOOR PLANS AND
ELEVATIONS
WITH THE PORCH
UPGRADE OPTION
PRICE VARIES



LEFT SIDE ELEVATION
(FLEX OPTIONS PLAN)



FRONT ELEVATION
(FLEX OPTIONS PLAN)



RIGHT SIDE ELEVATION
(FLEX OPTIONS PLAN)



REAR ELEVATION
(FLEX OPTIONS PLAN)



DETAILS AND PRICING SUBJECT TO CHANGE

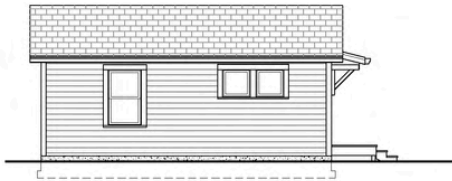


THE BLUEBELL
LOT 738

1 BED 416
1 BATH SQ FT



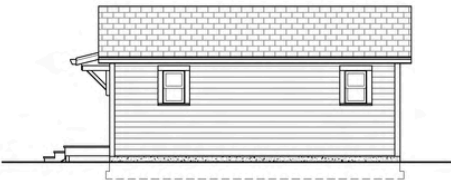
FLOOR PLANS AND ELEVATIONS



LEFT SIDE ELEVATION
(BASE PLAN)



FRONT ELEVATION
(BASE PLAN)



RIGHT SIDE ELEVATION
(BASE PLAN)



REAR ELEVATION
(BASE PLAN)

FLOOR PLANS AND
ELEVATIONS
WITH THE PORCH
UPGRADE OPTION
PRICE VARIES



LEFT SIDE ELEVATION
(FLEX OPTIONS PLAN)



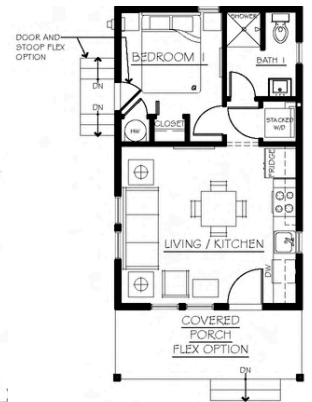
FRONT ELEVATION
(FLEX OPTIONS PLAN)



RIGHT SIDE ELEVATION
(FLEX OPTIONS PLAN)



REAR ELEVATION
(FLEX OPTIONS PLAN)



SEABROOK
SINCE 20 YEARS 2004



CLOVER
COTTAGES



LOT 728
CLOVER

1 BR +BUNK 1 BA
504 SQ FT

SOLD

LOT 729
CLOVER

1 BR +BUNK 1 BA
504 SQ FT

Not Released

LOT 730
CLOVER

1 BR +BUNK 1 BA
504 SQ FT

\$499,000

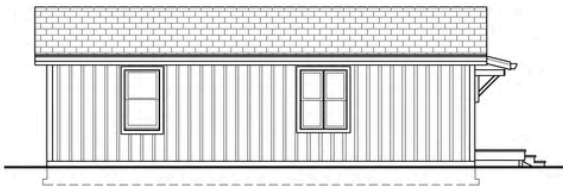


THE CLOVER
LOT 728

1 BED + BUNK 504
1 BATH SQ FT



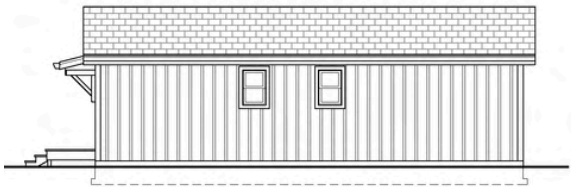
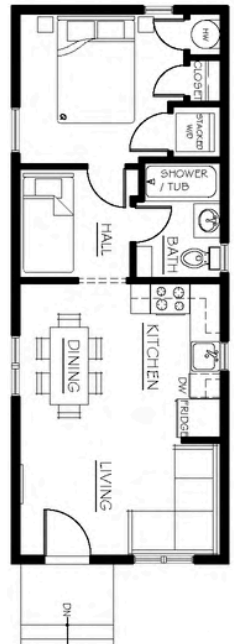
FLOOR PLANS AND ELEVATIONS



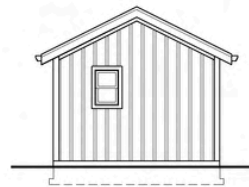
LEFT SIDE ELEVATION
(BASE PLAN)



FRONT ELEVATION
(BASE PLAN)



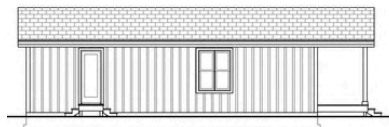
RIGHT SIDE ELEVATION
(BASE PLAN)



REAR ELEVATION
(BASE PLAN)

FLOOR PLANS AND
ELEVATIONS
WITH THE PORCH
UPGRADE OPTION
PRICE VARIES

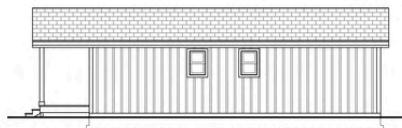
DETAILS AND PRICING SUBJECT TO CHANGE



LEFT SIDE ELEVATION
(FLEX OPTIONS PLAN)



FRONT ELEVATION
(FLEX OPTIONS PLAN)



RIGHT SIDE ELEVATION
(FLEX OPTIONS PLAN)



REAR ELEVATION
(FLEX OPTIONS PLAN)



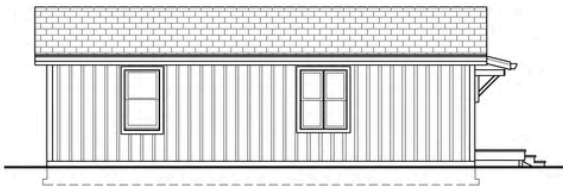


THE CLOVER
LOT 729

1 BED +BUNK 504
1 BATH SQ FT



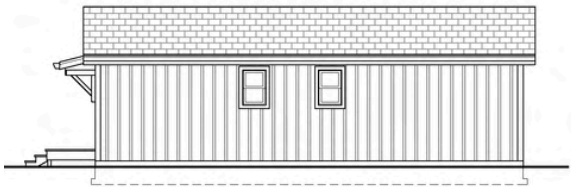
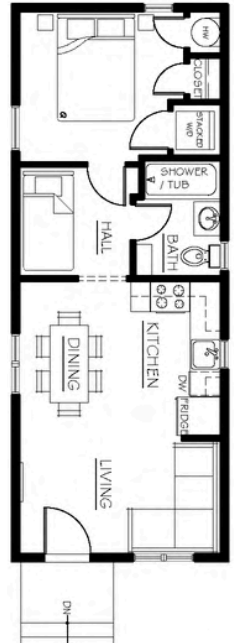
FLOOR PLANS AND ELEVATIONS



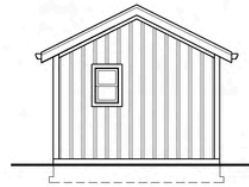
LEFT SIDE ELEVATION
(BASE PLAN)



FRONT ELEVATION
(BASE PLAN)



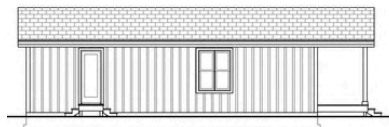
RIGHT SIDE ELEVATION
(BASE PLAN)



REAR ELEVATION
(BASE PLAN)

FLOOR PLANS AND
ELEVATIONS
WITH THE PORCH
UPGRADE OPTION
PRICE VARIES

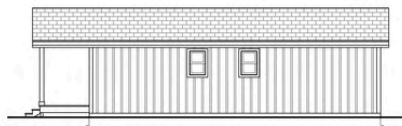
DETAILS AND PRICING SUBJECT TO CHANGE



LEFT SIDE ELEVATION
(FLEX OPTIONS PLAN)



FRONT ELEVATION
(FLEX OPTIONS PLAN)



RIGHT SIDE ELEVATION
(FLEX OPTIONS PLAN)



REAR ELEVATION
(FLEX OPTIONS PLAN)



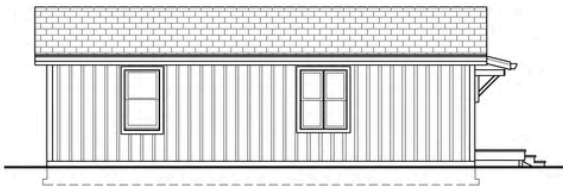


THE CLOVER
LOT 730

1 BED + BUNK 504
1 BATH SQ FT



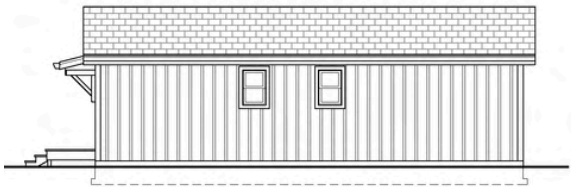
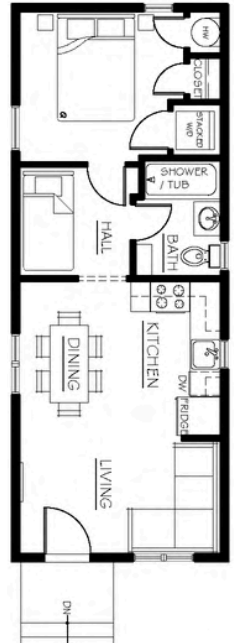
FLOOR PLANS AND ELEVATIONS



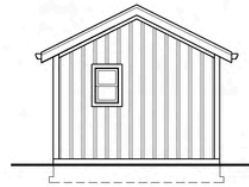
LEFT SIDE ELEVATION
(BASE PLAN)



FRONT ELEVATION
(BASE PLAN)



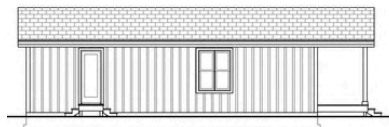
RIGHT SIDE ELEVATION
(BASE PLAN)



REAR ELEVATION
(BASE PLAN)

FLOOR PLANS AND
ELEVATIONS
WITH THE PORCH
UPGRADE OPTION
PRICE VARIES

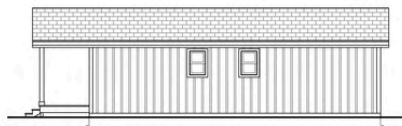
DETAILS AND PRICING SUBJECT TO CHANGE



LEFT SIDE ELEVATION
(FLEX OPTIONS PLAN)



FRONT ELEVATION
(FLEX OPTIONS PLAN)



RIGHT SIDE ELEVATION
(FLEX OPTIONS PLAN)



REAR ELEVATION
(FLEX OPTIONS PLAN)



SEABROOK
SINCE 20 YEARS 2004



CLOVER
COTTAGES



LOT 733
CLOVER

1 BR +BUNK 1 BA
504 SQ FT

Not Released

LOT 734
CLOVER

1 BR +BUNK 1 BA
504 SQ FT

SOLD

LOT 735
CLOVER

1 BR +BUNK 1 BA
504 SQ FT

SOLD

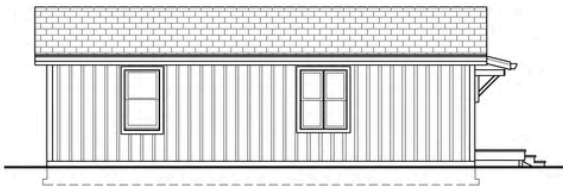


THE CLOVER
LOT 733

1 BED + BUNK 504
1 BATH SQ FT



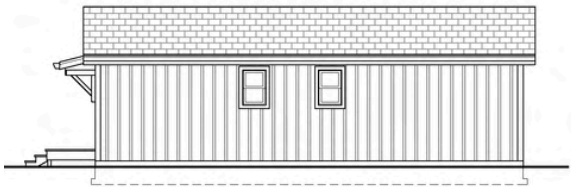
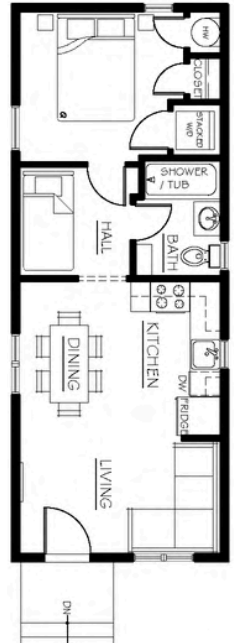
FLOOR PLANS AND ELEVATIONS



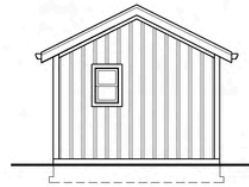
LEFT SIDE ELEVATION
(BASE PLAN)



FRONT ELEVATION
(BASE PLAN)

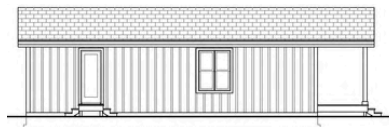


RIGHT SIDE ELEVATION
(BASE PLAN)



REAR ELEVATION
(BASE PLAN)

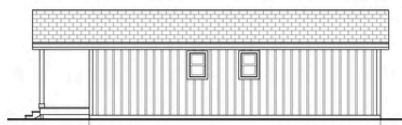
FLOOR PLANS AND
ELEVATIONS
WITH THE PORCH
UPGRADE OPTION
PRICE VARIES



LEFT SIDE ELEVATION
(FLEX OPTIONS PLAN)



FRONT ELEVATION
(FLEX OPTIONS PLAN)



RIGHT SIDE ELEVATION
(FLEX OPTIONS PLAN)



REAR ELEVATION
(FLEX OPTIONS PLAN)

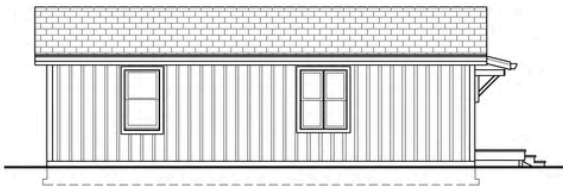


THE CLOVER
LOT 734

1 BED + BUNK 504
1 BATH SQ FT



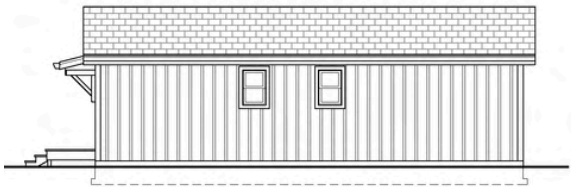
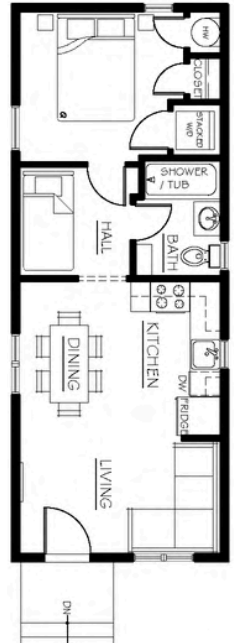
FLOOR PLANS AND ELEVATIONS



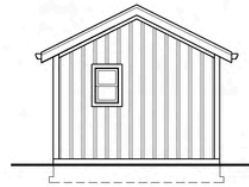
LEFT SIDE ELEVATION
(BASE PLAN)



FRONT ELEVATION
(BASE PLAN)

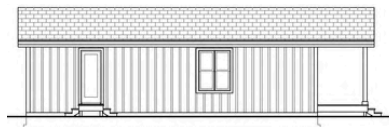


RIGHT SIDE ELEVATION
(BASE PLAN)



REAR ELEVATION
(BASE PLAN)

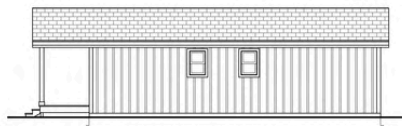
FLOOR PLANS AND
ELEVATIONS
WITH THE PORCH
UPGRADE OPTION
PRICE VARIES



LEFT SIDE ELEVATION
(FLEX OPTIONS PLAN)



FRONT ELEVATION
(FLEX OPTIONS PLAN)



RIGHT SIDE ELEVATION
(FLEX OPTIONS PLAN)



REAR ELEVATION
(FLEX OPTIONS PLAN)



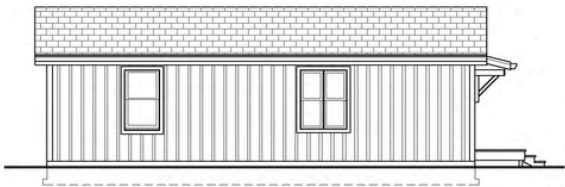


THE CLOVER
LOT 735

1 BED + BUNK 504
1 BATH SQ FT



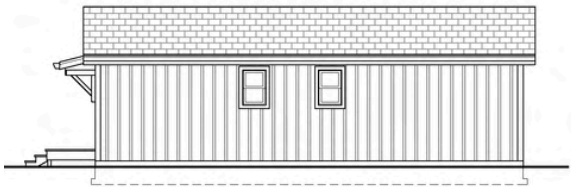
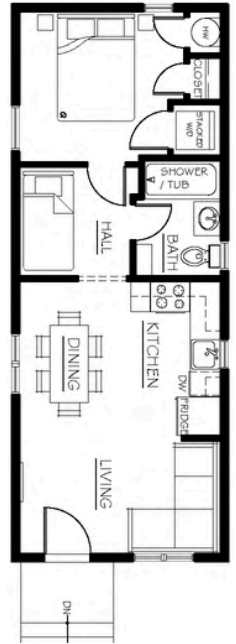
FLOOR PLANS AND ELEVATIONS



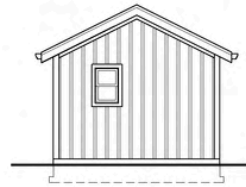
LEFT SIDE ELEVATION
(BASE PLAN)



FRONT ELEVATION
(BASE PLAN)



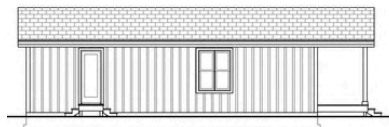
RIGHT SIDE ELEVATION
(BASE PLAN)



REAR ELEVATION
(BASE PLAN)

FLOOR PLANS AND
ELEVATIONS
WITH THE PORCH
UPGRADE OPTION
PRICE VARIES

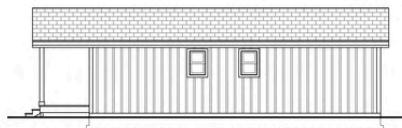
DETAILS AND PRICING SUBJECT TO CHANGE



LEFT SIDE ELEVATION
(FLEX OPTIONS PLAN)



FRONT ELEVATION
(FLEX OPTIONS PLAN)



RIGHT SIDE ELEVATION
(FLEX OPTIONS PLAN)



REAR ELEVATION
(FLEX OPTIONS PLAN)





LOT 723
FERN LILY

2 BR 1.5 BA
889 SQ FT

\$714,000

LOT 740
FERN LILY

2 BR 1.5 BA
889 SQ FT

Not Released

LOT 741
FERN LILY

2 BR 1.5 BA
889 SQ FT

Not Released

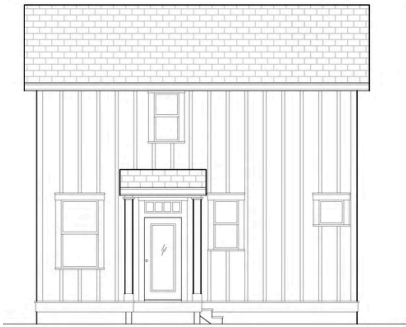


THE FERN LILY
LOT 723

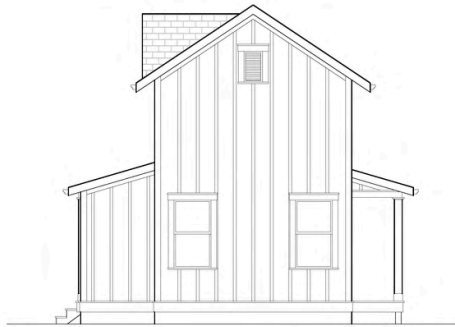
2 BED 889
1.5 BATH SQ FT



FLOOR PLANS AND ELEVATIONS



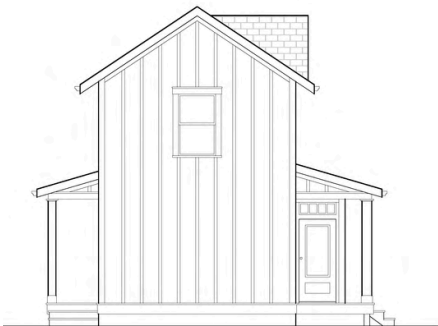
REAR ELEVATION



RIGHT ELEVATION



SECOND FLOOR

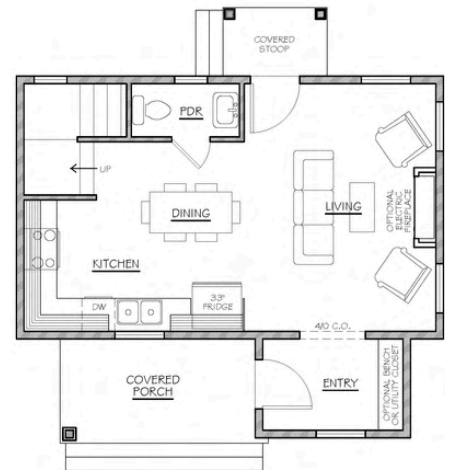


LEFT ELEVATION



FRONT ELEVATION

GRIDDED WINDOW PANES
ARE OPTIONAL UPGRADES



FIRST FLOOR

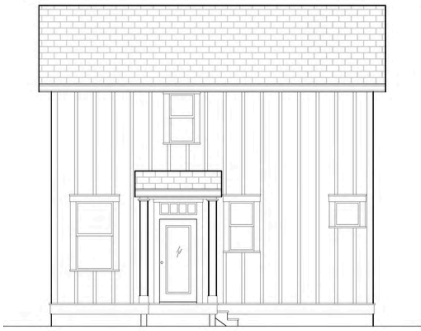


THE FERN LILY
LOT 740

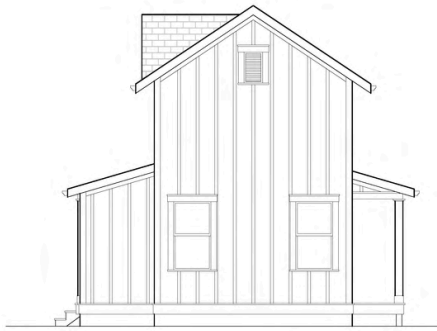
2 BED 889
1.5 BATH SQ FT



FLOOR PLANS AND ELEVATIONS



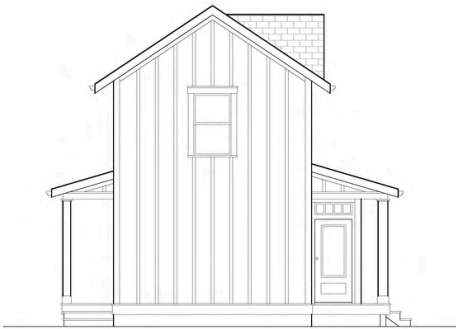
REAR ELEVATION



RIGHT ELEVATION



SECOND FLOOR

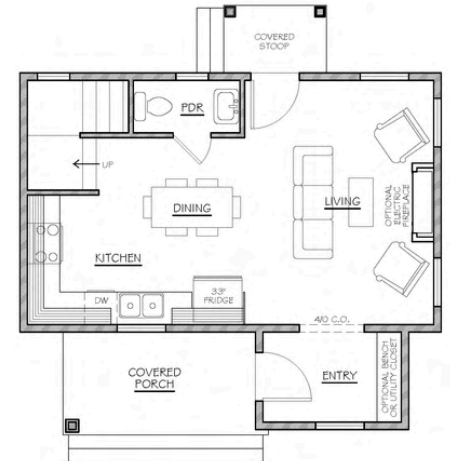


LEFT ELEVATION



FRONT ELEVATION

GRIDDED WINDOW PANES
ARE OPTIONAL UPGRADES



FIRST FLOOR



THE FERN LILY
LOT 741

2 BED 889
1.5 BATH SQ FT



FLOOR PLANS AND ELEVATIONS



REAR ELEVATION



RIGHT ELEVATION



SECOND FLOOR

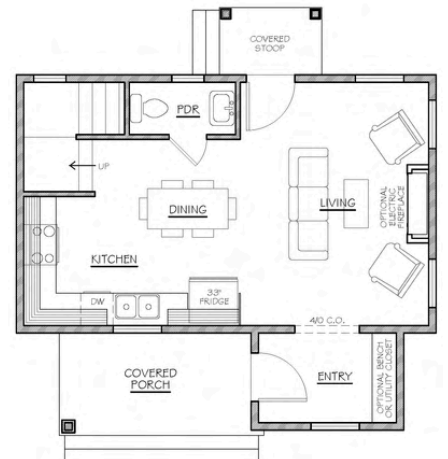


LEFT ELEVATION

GRIDDED WINDOW PANES
ARE OPTIONAL UPGRADES



FRONT ELEVATION



FIRST FLOOR

SEABROOK
SINCE 20 YEARS 2004



PACIFIC LILY
COTTAGES



LOT 724
PACIFIC LILY

2 BR 1.5 BA
928 SQ FT

\$734,000

LOT 739
PACIFIC LILY

2 BR 1.5 BA
928 SQ FT

Not Released



THE PACIFIC LILY
LOT 724

2 BED 928
1.5 BATH SQ FT



FLOOR PLANS AND ELEVATIONS



RIGHT SIDE ELEVATION



REAR ELEVATION



FIRST FLOOR PLAN



LEFT SIDE ELEVATION



FRONT ELEVATION



SECOND FLOOR PLAN



THE PACIFIC LILY
LOT 739

2 BED 928
1.5 BATH SQ FT



FLOOR PLANS AND ELEVATIONS



RIGHT SIDE ELEVATION



REAR ELEVATION



FIRST FLOOR PLAN



LEFT SIDE ELEVATION



FRONT ELEVATION



SECOND FLOOR PLAN

SEABROOK
SINCE 20 YEARS 2004



SHASTA DAISY COTTAGES



LOT 731
SHASTA DAISY

2 BR 1.5 BA
832 SQ FT

\$674,000

LOT 732
SHASTA DAISY

2 BR 1.5 BA
832 SQ FT

SOLD



THE SHASTA DAISY
LOT 731

2 BED 832
1.5 BATH SQ FT



FLOOR PLANS AND ELEVATIONS



LEFT ELEVATION
(BASE PLAN)



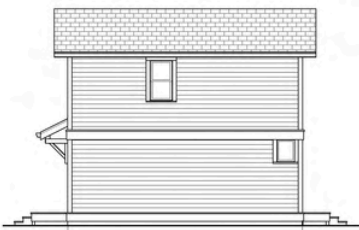
FRONT ELEVATION
(BASE PLAN)



FIRST FLOOR PLAN
(BASE PLAN)



SECOND FLOOR PLAN
(BASE PLAN)



RIGHT ELEVATION
(BASE PLAN)



REAR ELEVATION
(BASE PLAN)

FLOOR PLANS AND
ELEVATIONS
WITH THE PORCH
UPGRADE OPTION
PRICE VARIES



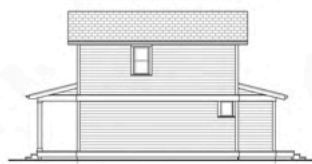
LEFT ELEVATION
(FLEX OPTIONS)



FRONT ELEVATION
(FLEX OPTIONS)



FIRST FLOOR PLAN
(FLEX OPTIONS)



RIGHT ELEVATION
(FLEX OPTIONS)



REAR ELEVATION
(FLEX OPTIONS)



THE SHASTA DAISY
LOT 732

2 BED 832
1.5 BATH SQ FT



FLOOR PLANS AND ELEVATIONS



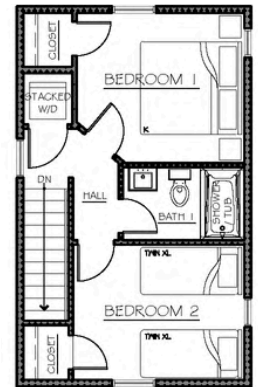
LEFT ELEVATION
(BASE PLAN)



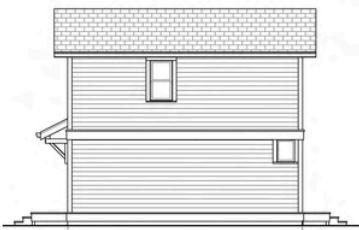
FRONT ELEVATION
(BASE PLAN)



FIRST FLOOR PLAN
(BASE PLAN)



SECOND FLOOR PLAN
(BASE PLAN)



RIGHT ELEVATION
(BASE PLAN)



REAR ELEVATION
(BASE PLAN)

FLOOR PLANS AND
ELEVATIONS
WITH THE PORCH
UPGRADE OPTION
PRICE VARIES



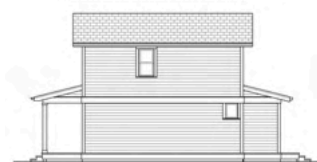
LEFT ELEVATION
(FLEX OPTIONS)



FRONT ELEVATION
(FLEX OPTIONS)



FIRST FLOOR PLAN
(FLEX OPTIONS)



RIGHT ELEVATION
(FLEX OPTIONS)



REAR ELEVATION
(FLEX OPTIONS)

SEABROOK
SINCE 20 YEARS 2004



COAST LILY
COTTAGES



LOT 742
COAST LILY

2 BR 1.5 BA
936 SQ FT

Not Released

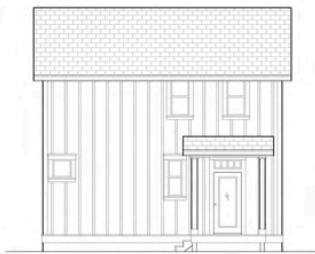


THE COAST LILY
LOT 742

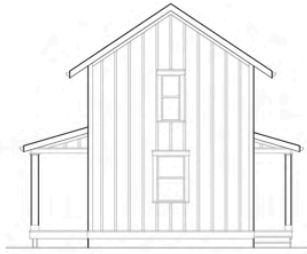
2 BED 936
1.5 BATH SQ FT



FLOOR PLANS AND ELEVATIONS



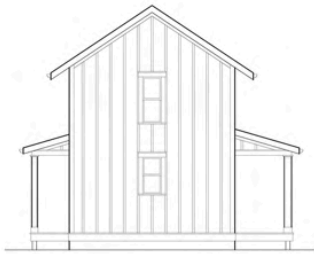
SOUTH ELEVATION



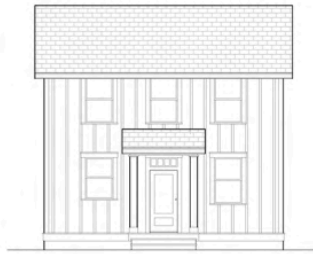
WEST ELEVATION



FIRST FLOOR



EAST ELEVATION



NORTH ELEVATION



SECOND FLOOR

WRAPAROUND PORCH

FRONT PORCH

FLOOR PLANS AND
ELEVATIONS
WITH THE PORCH
UPGRADE OPTION
PRICE VARIES



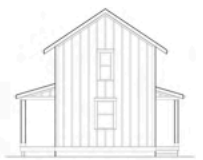
SOUTH ELEVATION



WEST ELEVATION



SOUTH ELEVATION



WEST ELEVATION



EAST ELEVATION



NORTH ELEVATION



EAST ELEVATION



NORTH ELEVATION

SEABROOK

SINCE 20 YEARS 2004

EMAIL: SALES@SEABROOKWA.COM

CALL: (360)276-7031

ONLINE: SEABROOKWA.COM

INTERESTED?

Contact us today to learn
more about purchasing in
Fernwood Station!

