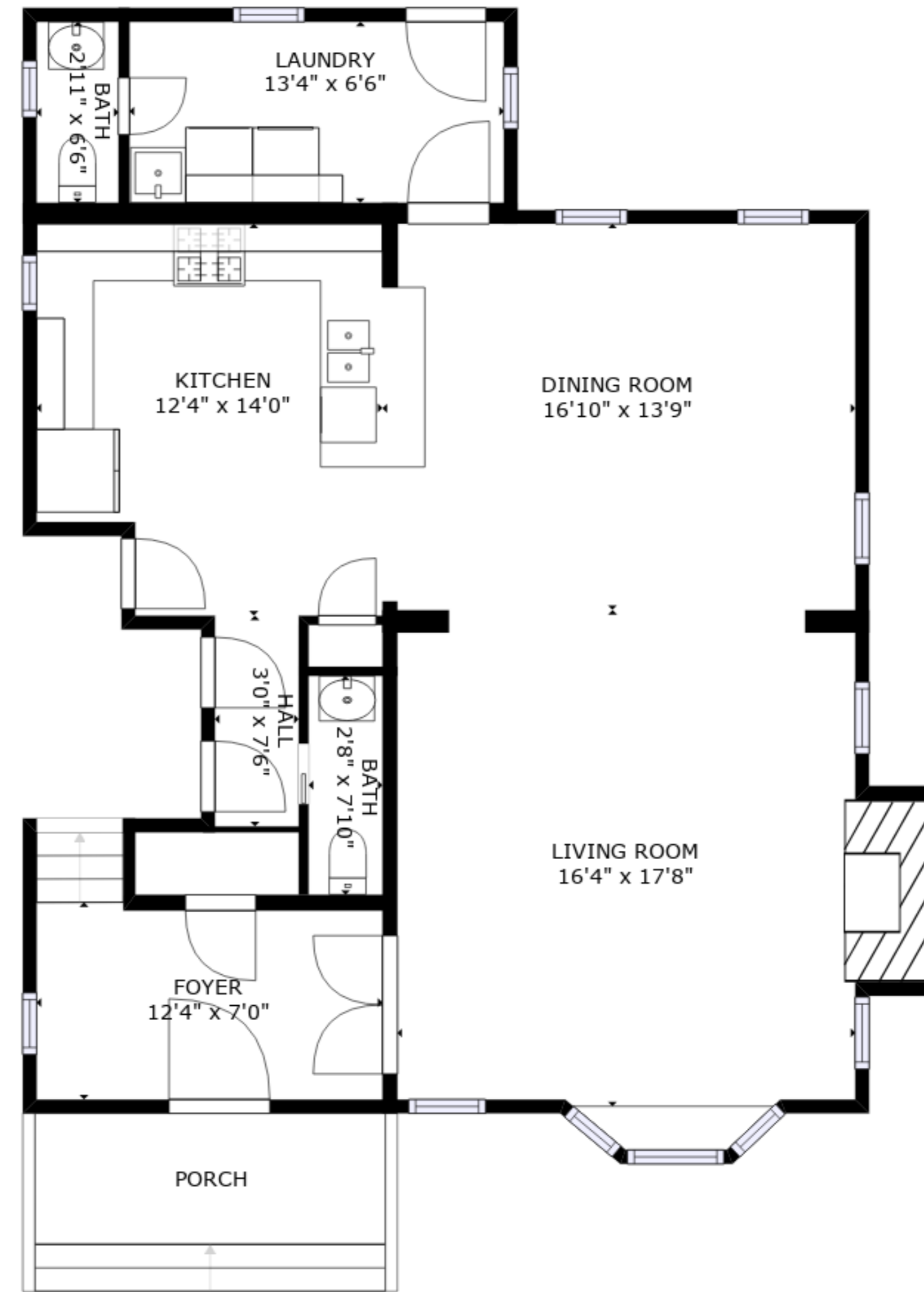


FLOOR 2



FLOOR 3



FLOOR 1

Carriage house as a Queen bed and a daybed

GROSS INTERNAL AREA
 FLOOR 1: 998 sq. ft, FLOOR 2: 865 sq. ft
 FLOOR 3: 711 sq. ft, EXCLUDED AREAS:
 PORCH: 58 sq. ft, REDUCED HEADROOM BELOW 1.5M: 11 sq. ft
 TOTAL: 2573 sq. ft
 SIZES AND DIMENSIONS ARE APPROXIMATE, ACTUAL MAY VARY.